

QSFP28 connector

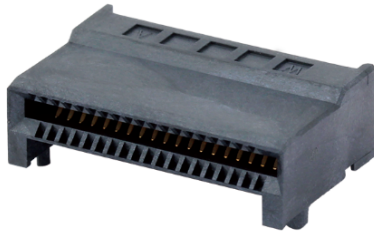


Quad Small Form-Factor Pluggable (QSFP) Interconnect System

Withwave's **QSFP28 connector** is designed with 38 pins in 0.8mm pitch and is based on differential pair 100 ohm. With four data channels in one connector, data can be transferred at up to 28 Gbps/channel. This interface can replace 4 standard SFP+ with one, saving space and cost.



Specification



MECHANICAL PERFORMANCE

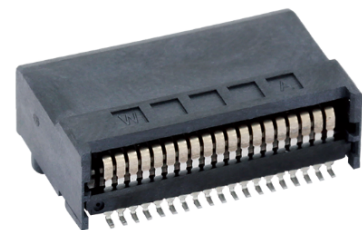
Mating Cycles : 250cycles
Mating Force 60N max.
Un-mating Force 30N max.

ELECTRICAL PERFORMANCE

Contact Resistance: <math><10\text{m}\Omega</math> change from initial reading after environmental exposure
Current Rating(with <math><30^\circ\text{C}</math> temperature rise above ambient): 0.5A min.
Insulation Resistance : 1000Mohm min.
Withstanding Voltage : 300Vrms min.

MATERIAL

Housing : High-Temperature LCP, UL94V-01
Contacts : High performance Copper Alloy
Plating(s) :
Contact Area - Au 0.76um , Ni 1.27um
Lead - Sn 2.54um, Ni 1.27um



ENVIRONMENTAL

Operating Temperature range : -40 to +85°C
RoHS Compliant



329, Saeun-ro, Giheung-gu,
Yongin-si, Gyeonggi-do,
17078, KOREA



TEL : +82-70-7118-0705
FAX : +82-70-7118-0777



sales@with-wave.com
www.with-wave.com