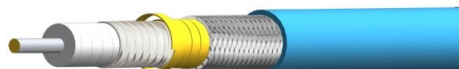


W2 Series are complete line of high performance flexible microwave cable assemblies.
W213 have low loss flexible cable characteristics with amplitude stability and low density PTFE structure to achieve velocity propagation of **76 %**.

They have excellent RF performance up to **26.5 GHz** with SMA & N-type connectors, respectively.

■ **Features**



- Center Conductor : Silver Plated Copper
- Dielectric : Low Density PTFE
- Outer Conductor : Silver Plated Copper Ribbon
- Inner layer : Low Density PTFE
- Outer Shields : Silver Plated Copper
- Jacket : FEP



■ **Specification**

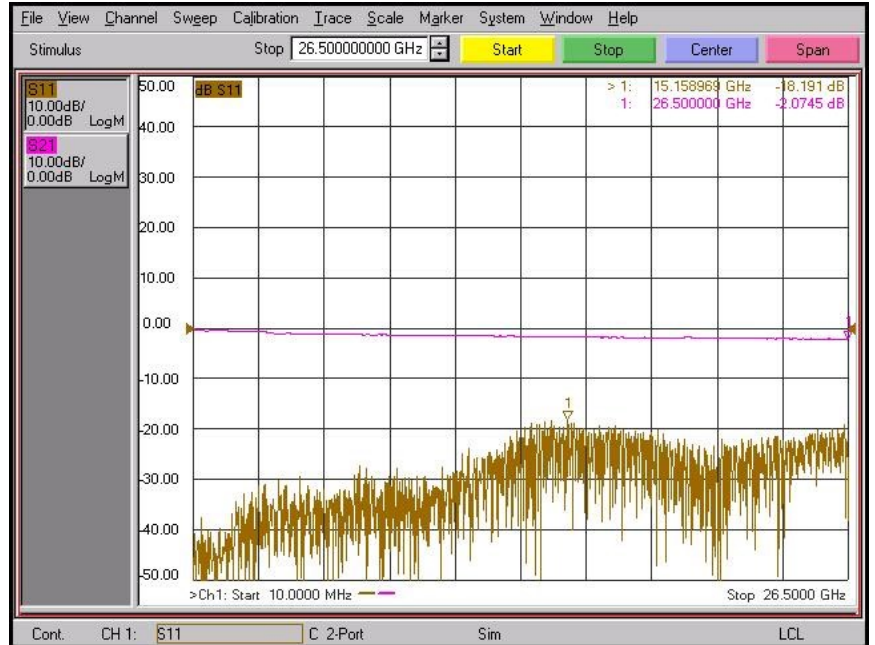
Scope	Specification	W213(26.5 GHz)	
Physical	Center Conductor (mm)	1.29	
	Dielectric (mm)	3.91	
	Outer Conductor (mm)	4.15	
	Inner layer (mm)	4.28	
	Outer Shields	4.73	
	Jacket	5.20	
Electrical	Impedance	50 Ohm	
	Velocity of Propagation (%)	Typical 76	
	Shielding effectiveness(dB)	<-100	
	VSWR (based on connector selection)	< 1.3 to 26.5 GHz	
	Attenuation at 20 °C (Typical)	at 6.0 GHz	0.7 dB/m
		at 10.0 GHz	1.0 dB/m
		at 18.0 GHz	1.3 dB/m
at 26.5 GHz		1.6 dB /m	
Mechanical & Environmental	Weight (g/M)	60	
	Min. bending radius	20.8	
	Temperature (Storage)	-55 ~+200°C	

■ **Test Result**

W213 cable assembly

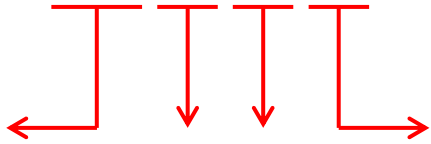
Part No. : W213-SM11SM1-1M

- Frequency : 10 MHz to 26.5 GHz
- Connector : SMA (Male)
- Cable Length : 1 meter



■ **Selection Guide**

W213- SM1SM1 - 1M



Cable Type

W213

Connector Type

SM1 : SMA Male
NM1 : N-type Male

Cable Length

Unit : Meter

