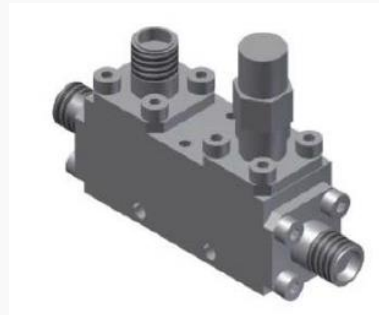


Withwave's Directional Coupler offer frequency range from 12 GHz to 18 GHz and low insertion loss & VSWR. This Coupler (BC120180-10-SF) have 10 dB coupling & 12 dB directivity characteristics.

■ Features

- Nominal Coupling : 10 ± 1.0 dB
- Directivity : 12 dB (Min.)
- SMA Connector (Female)



■ Specification

Scope	Specification	BC120180-10-SF
Electrical	Impedance	50 Ohm
	Freq. range	12 to 18 GHz
	Insertion Loss	0.7 dB
	VSWR	1.50: 1
	Coupling	10 ± 1.0 dB
	Coupling Sensitivity	± 0.6 dB
	Directivity	12 dB (Min.)
Mechanical & Environmental	Power Handling	30 W (Max.)
	Connector	SMA (Female)
	Temperature	-40 to +85 degrees

■ Drawing

Unit : mm

