

Our goal is to become your global partner for innovative connectivity solutions in microwave and high-speed interconnection

Company Overview



About Withwave

Withwave believe people matter, and taking care of our customers and our employees is paramount in how we approach our business. We are committed to globally interconnecting service and technology to take the industry further faster.

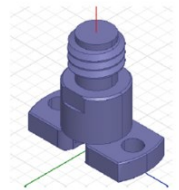
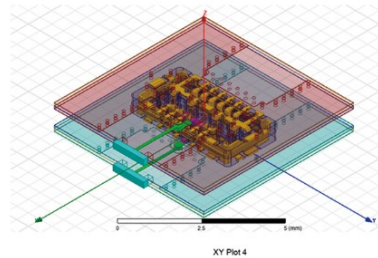


Capabilities

Withwave's in-house capabilities encompass design, development, manufacturing, and testing, enabling us to respond quickly and accurately to customer's needs.

Engineering

- 3D EM Modeling
- Advanced Microwave IC & System Design
- CAD / CAM & Solid Modeling
- Precision Mold Design & Simulation
- Automation Design and S/W Programing
- Reliability Analysis



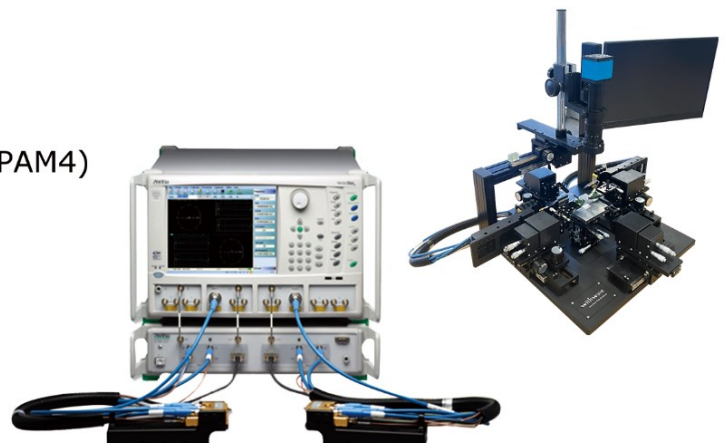
Manufacturing

- Precision Mold Injection Shops
- Connector, Contact & Cable Assembly
- Semi-Auto PCB Assembly & Inspection
- Automated Test & Packaging
- Validation Testing



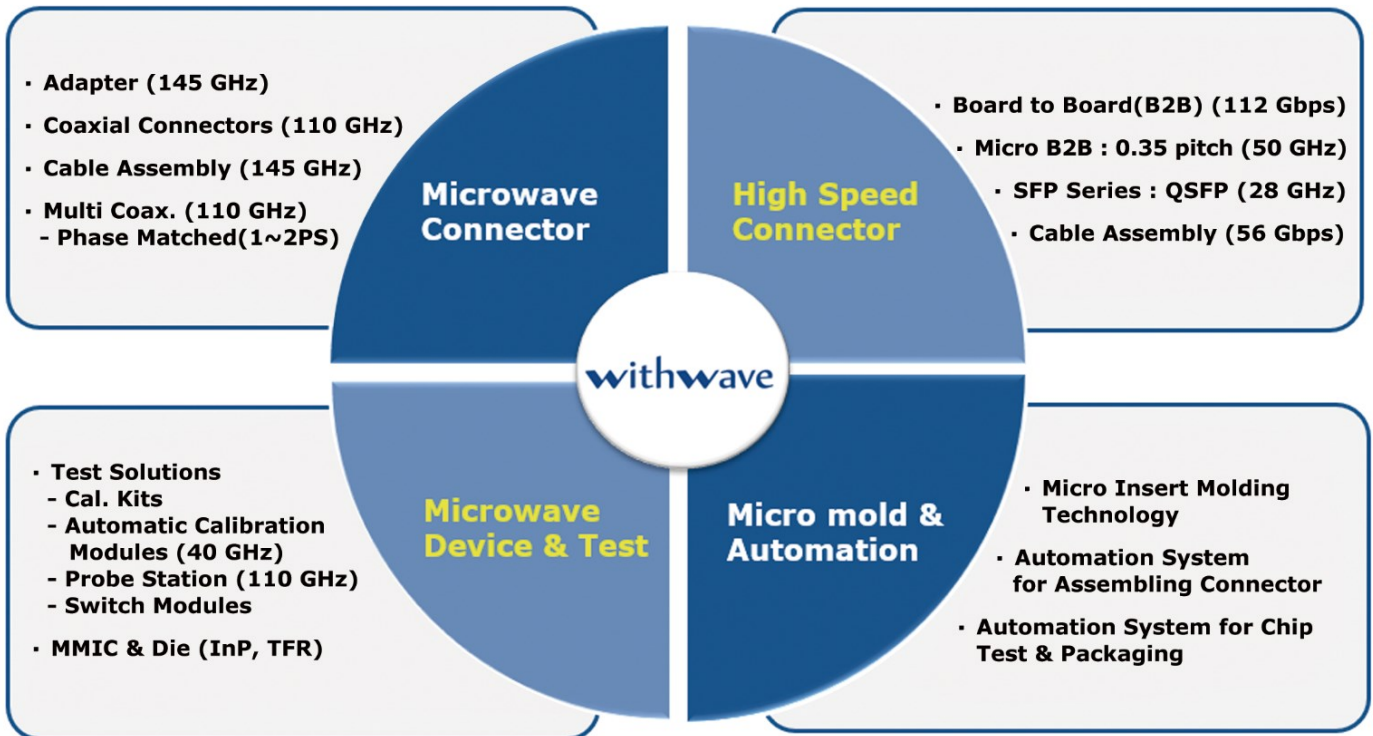
Testing/Qualification

- RF Testing up to 145 GHz (0.8 mm)
- High Speed Digital Testing up to 400 Gbps (PAM4)
- MMIC Probing up to 67 GHz
- Vision Inspection Programing
- RF Calibration Kit & Module
- PIM Testing



Core Technology

Core Technologies of WithWave for Microwave & High Speed Total Solution



Product Family



Product Lineup

Microwave Connector

- End Launch Type : SMA, 2.92 mm, 2.4 mm, 1.85 mm, 1.0 mm (110 GHz)
- Vertical Launch Type : SMA, 2.92 mm, 2.4 mm, 1.85 mm, 1.0 mm (110 GHz)
- Panel Mount Type : SMA, 2.92 mm, 2.4 mm
- SMT Type : SMP, SMPM, SMPS (67 GHz)



Microwave Adapter

- In Series & Between Series
- Straight Type : SMA, N, 2.92 mm, 3.5 mm, 2.4 mm, 1.85 mm, 1.0 mm, 0.8 mm (145 GHz)
- Right Angle Type : 2.92 mm, 2.4 mm, 1.85 mm



Microwave Cable Assembly

- Ultra Low Loss : SMA, 2.92 mm, 3.5 mm, 2.4 mm
- Flexible & Phase Stable : SMA, N, 2.92 mm, 2.4 mm, 1.85 mm, 1.0 mm, 0.8 mm (145 GHz)
- Semi-Rigid & Semi-Flexible : SMA, N, 2.92 mm, 2.4 mm
- Push on : SMP/SMPM/SMPS to 2.92 mm & 2.4 mm



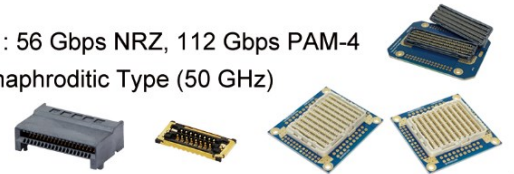
Microwave Switch Module

- Absorptive Switch Modules (MMIC)
 - SP4T (10, 18, 44 GHz)
 - SP8T (8 GHz)
 - SP10T (18, 44 GHz)
 - SP12T (44 GHz)
- Reflective Switch Modules (MEMS)
 - SP4T (18 GHz)
 - SP10T (18 GHz)
 - 4-Port Matrix Switch (20 GHz)



High Speed Connector

- High Speed Board to Board Connectors (0.9 & 1.0 mm pitch) : 56 Gbps NRZ, 112 Gbps PAM-4
- High Speed Micro-Miniature Board to Board Connector: Hermaphroditic Type (50 GHz)
- QSFP28 Connector (0.8 mm pitch) : 28 Gbps



High Speed Cable Assembly

- High Speed MultiCoax Cable Assemblies (WMX Series) : 20, 40, 50, 67 GHz, 110 GHz
- High Speed MultiCoax Cable Assemblies (WMX, BES type) : 20, 40, 50 GHz
- Micro Flexible PCB (HMB) : 50 GHz



Calibration Kits & Test Probe

- Mechanical Calibration Kits : N-type (8 GHz), 3.5 mm (9 GHz)
- Automatic Calibration Modules : N-type (18 GHz), 3.5 mm (26.5 GHz) in 2- & 4-Ports
- T-Probe (Pogo Type) : GSG, GS type (20 & 40 GHz)
- RF & mmWave Probe Station



Absorber Sheet

- LS Series (< 6 GHz)
- MD Series (< 24 GHz)
- HS Series (< 40 GHz)
- MT Series (< 18 GHz)
- HT Series (< 40 GHz)
- MS Series (< 18 GHz)

