

Soft Contact | Vertical Launch Connectors



# Soft Contact | Vertical Launch Connectors

Withwave's **Soft Contact | Vertical Launch Connectors with Pogo Pin** are specially designed for solderless vertical PCB launch without any deformation of signal trace on test & measurement board. These connectors have excellent electrical transition performance up to 26,5, 40, 50 & 67 GHz respectively as well as reduce installation time by eliminating soldering.

## Features

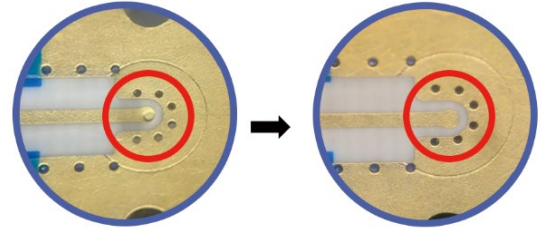
- Easy & solderless installation on PCB
- No damage PCB pattern
- Enable use to flexible PCB

## Application

- Thin substrate launch
- RF test & measurement
- High speed digital test



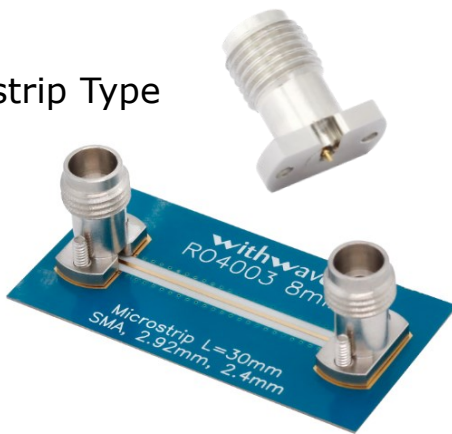
**Pogo Pin**



Standard Vertical type  
(Deformation on PCB)

**Soft Contact Vertical Type**  
(No deformation on PCB)

## Microstrip Type



## Stripline Type



## Test Result (DC to 40 GHz)

