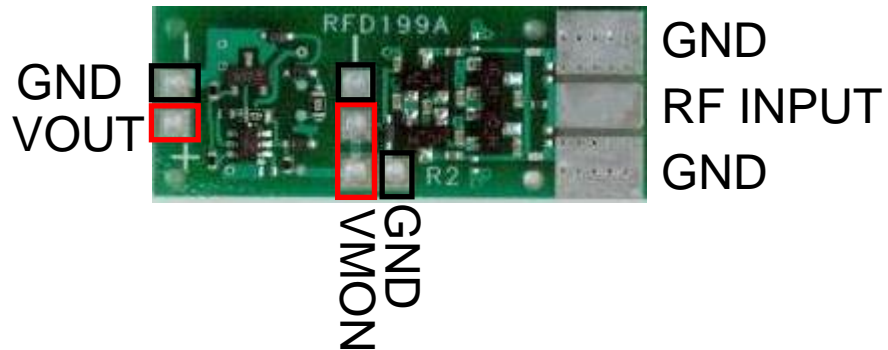
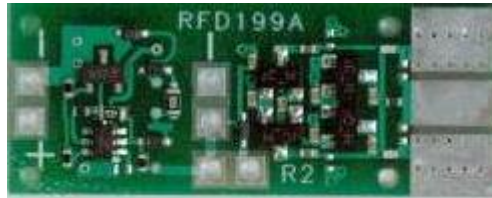


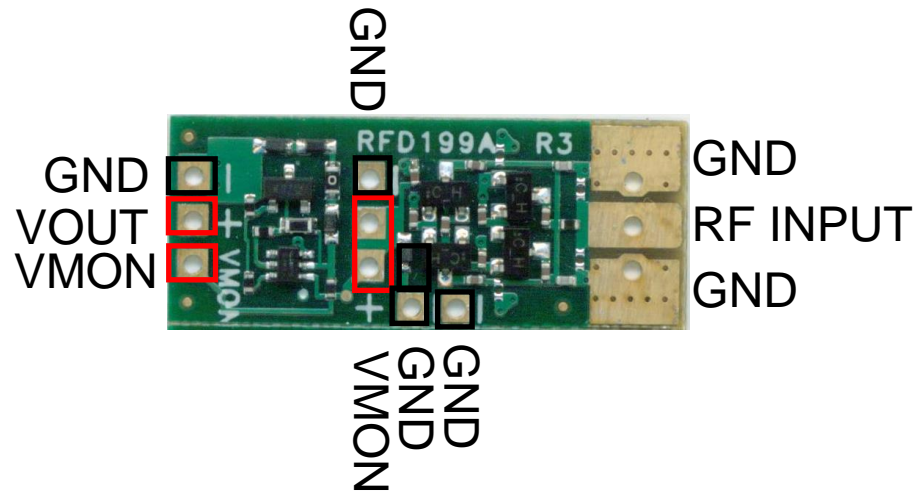
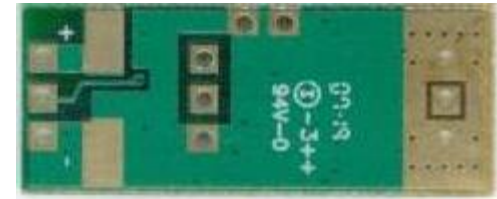
# RFD199A-PCB Rev. 2 (R2)

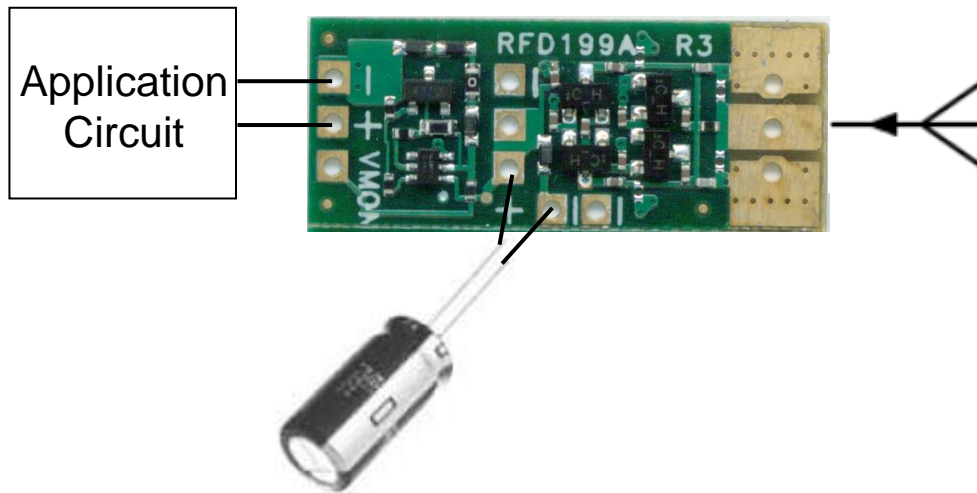
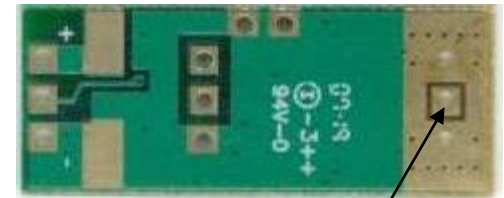
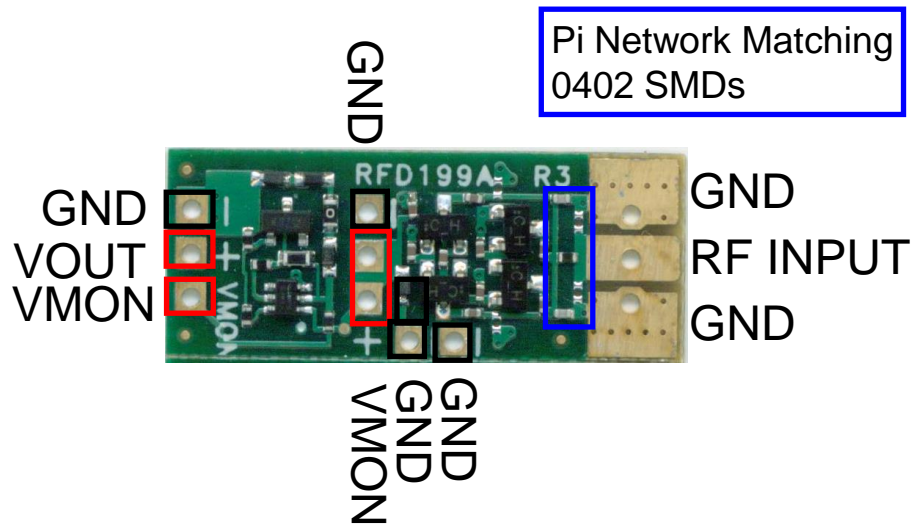
0.062" thick FR-4 170Tg PCB, Sn-Pb finish



# RFD199A-PCB Rev. 3 (R3)

0.031" thick FR-4 170Tg PCB, ENIG finish



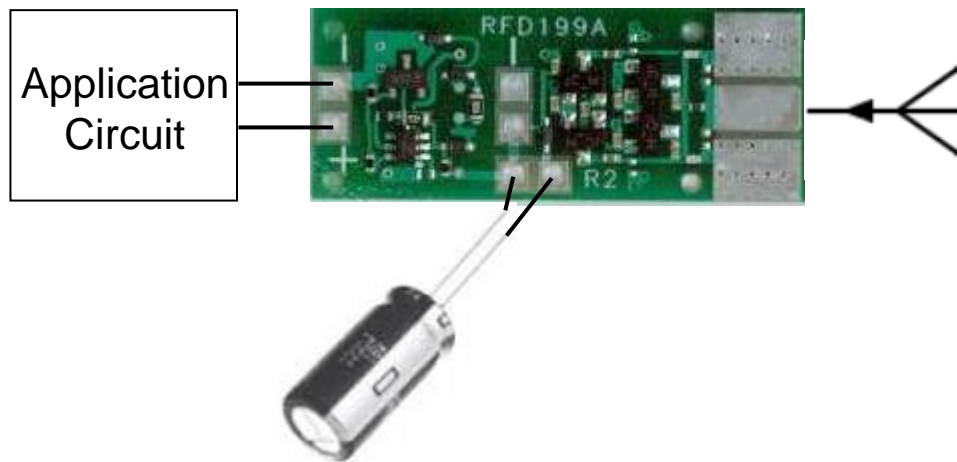
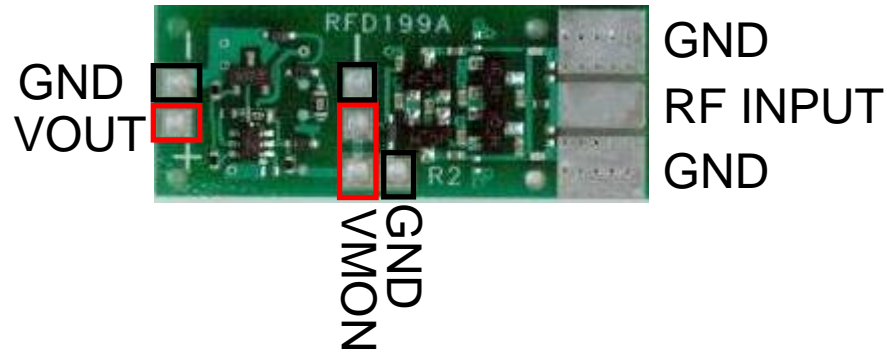


RF INPUT: 10MHz...2.5GHz input pin. Use either SMA or solder dipole wires directly to the via holes. Matching components may be required or need to be adjusted for best performance.

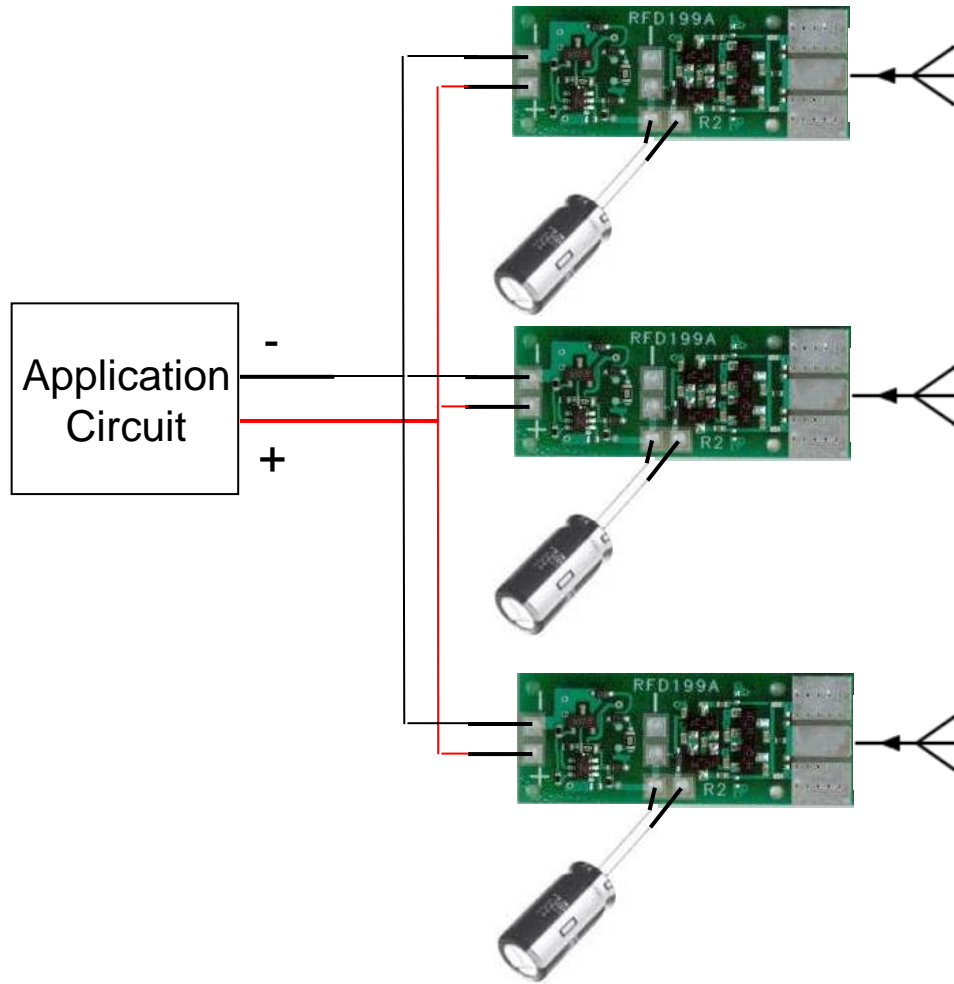
VMON: RF-DC Converter Output Voltage

VOUT: Regulated/Pulsed DC Output Voltage from Solar Engine Circuit

# RFD199A-PCB Rev. 2



# Higher Current Output



# A 1x5 Array Is Available

