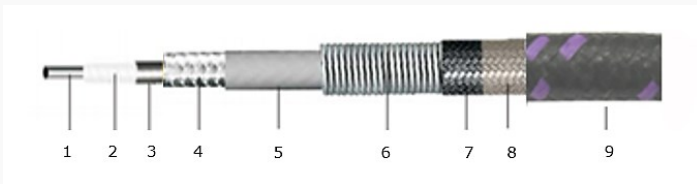


TM
W-Test Cable Assemblies are complete line of high precision flexible microwave cable assemblies, specially for stable phase testing. These **WT145 Cable Assemblies** are designed by excellent microwave interconnection technologies and have **good phase and amplitude stability up to 145 GHz**. It is claimed to have excellent insertion loss, high phase/amplitude stability in relation to temperature.



■ **Features**



1. **Center Conductor** : Silver Plated Copper
2. **Dielectric core** : Solid PTFE
3. **Outer Conductor 1** : Silver Plated Copper Tape
4. **Outer Conductor 2** : Silver Plated Copper
5. **Jacket** : FEP
6. **Crush Protection Layer**
7. **Braiding**
8. **PTFE Stable Gum**
9. **Braided Outer Jacket**

■ **Specification**

Scope	Specification	WT145 (145 GHz)
Electrical	Impedance(Ohm)	50
	Operation Freq.(GHz)	145
	VSWR(Max)	< 1.65 to 145 GHz
	Amplitude stability (dB) *	< +/- 0.6
	Phase stability (degree) *	< +/- 23
	Velocity of propagation(%)	70
	Voltage Withstand (V, DC)	350
Physical	Shielding Effectiveness (dB)	<-90
	Bending radius(Min)	20 mm
	Cable Diameter(mm)	6.4
Environmental	Operating Temperature (degree)	40 to +85 **

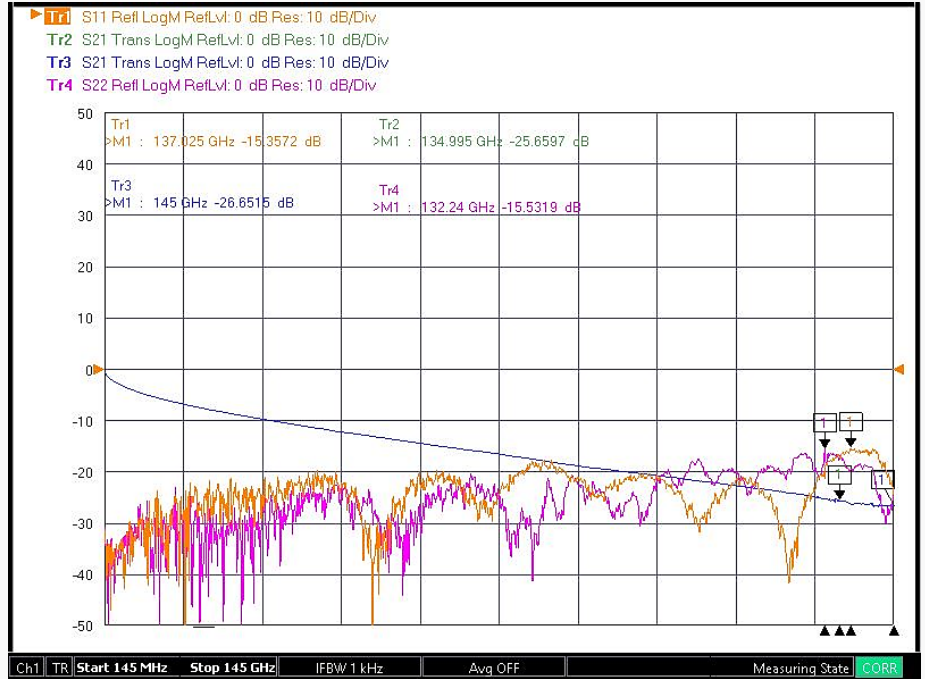
* Cable (length : 1 meter) was wrapped 360 degree around Φ 30 mm mandrel

** Adhesive type shrinkable tube: - -40 ~+85 °C / Non-adhesive type shrinkable tube: - -40 ~ + 125 °C

■ **Test Result**

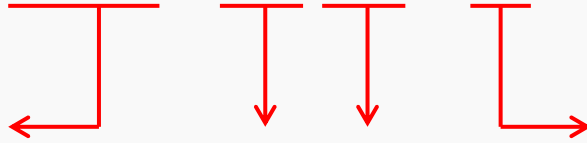
Part No. : WT145-DM1DM1-1M

- Frequency : DC to 145 GHz
- Connector : 0.8 mm (Male)
- Cable Length : 1.0 meter



■ **Selection Guide**

WT145 – DM1DM1 – 1M



Cable Type

WT145 (145 GHz)

Connector Type

DM1: 0.8 mm Male
DF1 : 0.8 mm Female

Cable Length

Unit : Meter



■ **Revision History**

Revision	Date	Changes
Ver 1.0	2024-12-01	Release New WT145 Cable Assembly (145 GHz)