

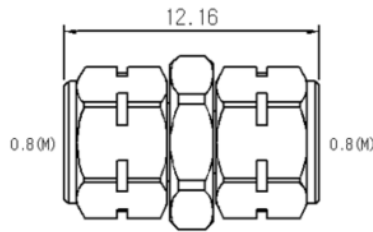
Precision Adapters (0.8 mm Series): DC to 145 GHz



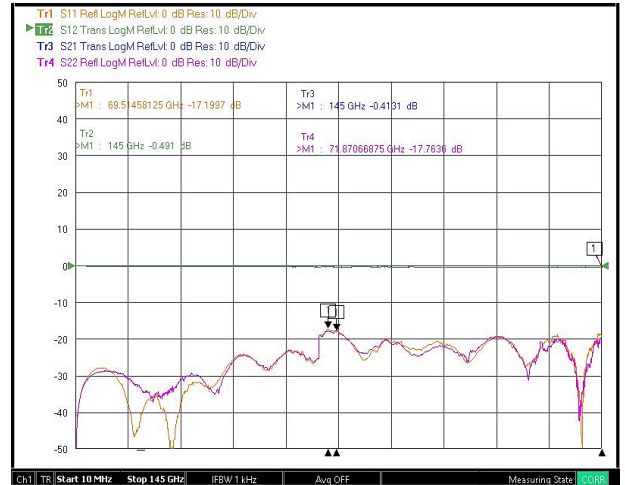
Precision 0.8 mm Adapter Series (DC to 145 GHz)

Withwave's precision 0.8 mm adapter series are designed based on precision microwave interconnection technologies for 5 & 6G application. These precision microwave connector interfaces ensure excellent performance **up to 145 GHz**.

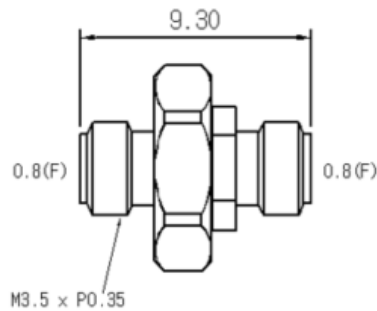
0.8 mm(M) to 0.8 mm(M)



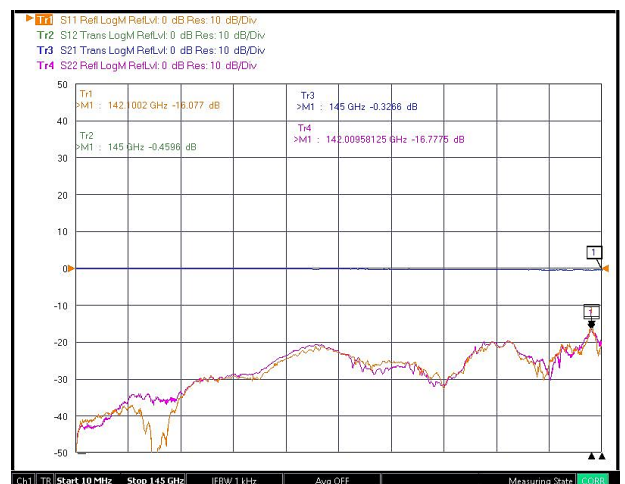
Part No: AD23M23MS1



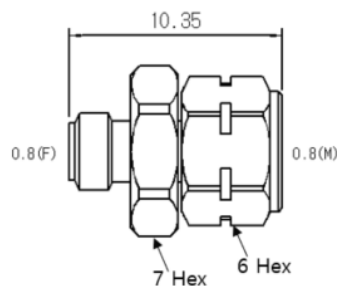
0.8 mm(F) to 0.8 mm(F)



Part No: AD23F23FS1



0.8 mm(M) to 0.8 mm(F)



Part No: AD23M23FS1

